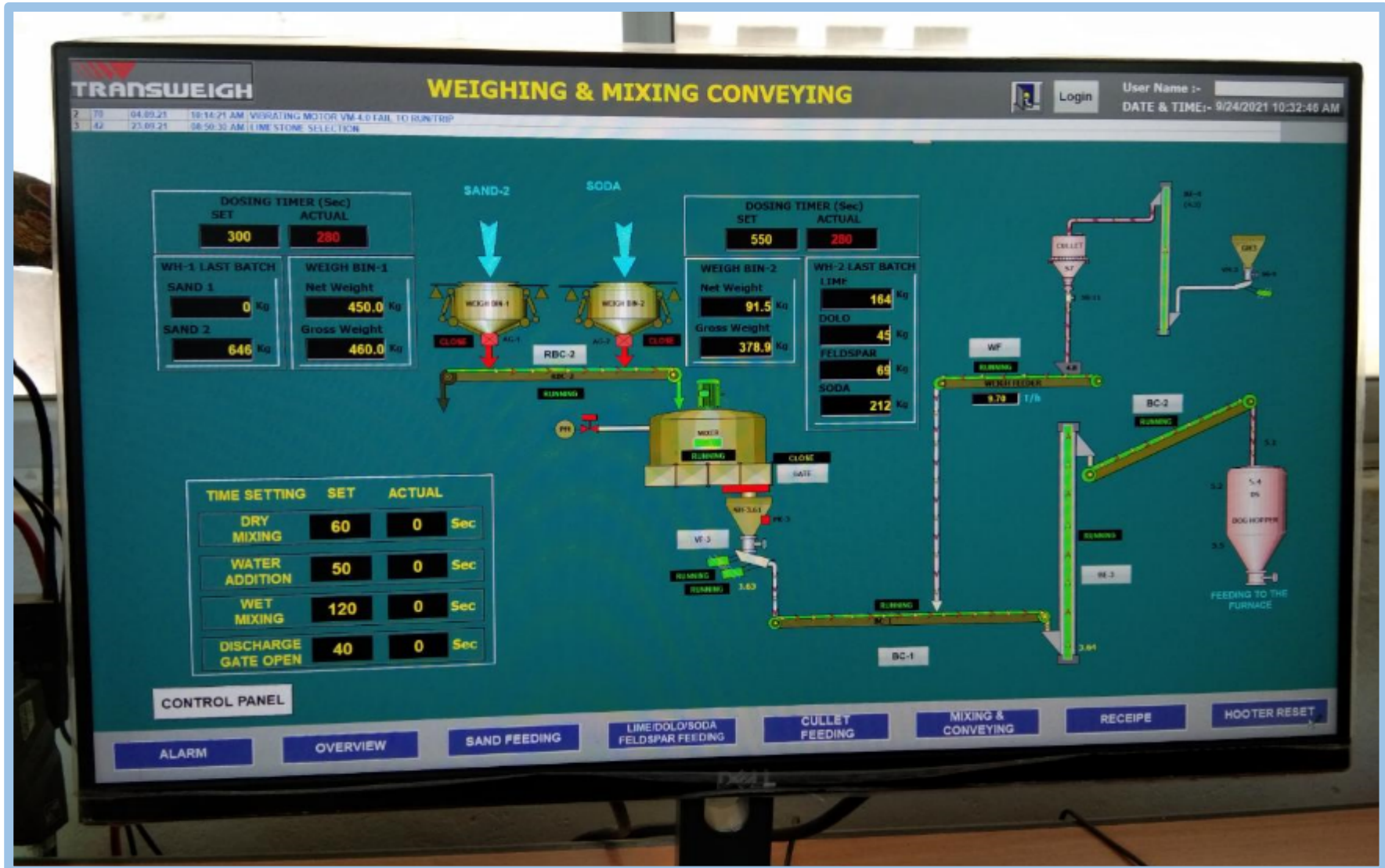


Process	Supplier	Salient Features
<b>Furnace</b>	<b>M/s. Horn Glass Industries Germany</b>	Our 130 TPD new furnace commissioned in Dec 2019. State of Art Design & Controls with SCADA PLC with automatic combustion and flue exhaust. Highly efficient heat exchanging regenerator.
<b>Distributor &amp; Forehearth</b>	<b>M/s. Horn Glass Industries Germany</b>	Highly efficient differentially fired Glass conditioning zones with auto temperature controls and simultaneous heating & cooling zones.
<b>Forming Machine</b>	<b>M/s. Bottero Hollow Glass Division</b>	Modern Electronic Servo controlled Glass Forming Machines capable of producing high quality glass bottles at speeds comparable to best of industry standards.  Product Range includes bottles from 200ml to 1 litre capacity with additional Jar Manufacturing features using QUANTUM Plunger Mechanism.
<b>Annealing LEHR</b>	<b>M/s. Antonini S.R.L Italy</b>	Antonini Install and Forget Annealing LEHR's with PLC control, Temperature Management and highly efficient Gas firing system. Capable of achieving Grade Zero Annealing for Glass containers.
<b>Inspection Machine</b>	<b>M/s. TIAMA, France  M/s. IRIS, France</b>	Model MX 4 Finish and Base inspection multi camera based inspection machine capable of inspecting 200 Bottles per min accurately.

**Milly Glass – A Model Glass Plant in East Africa.**

# Batch House – SCADA | Automatic Weighing Control of Raw Materials

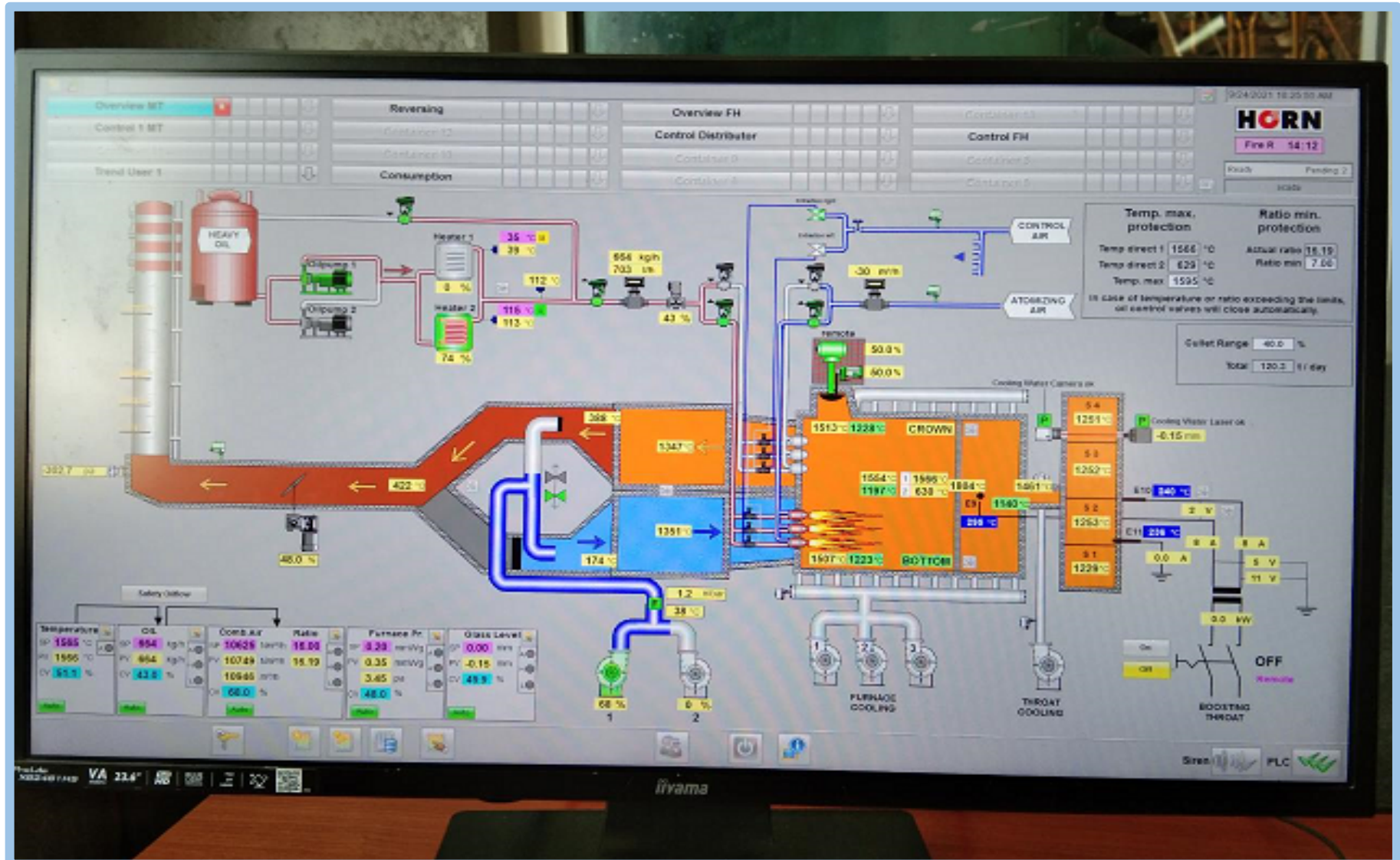




# Furnace Rebuild – HORN 2019

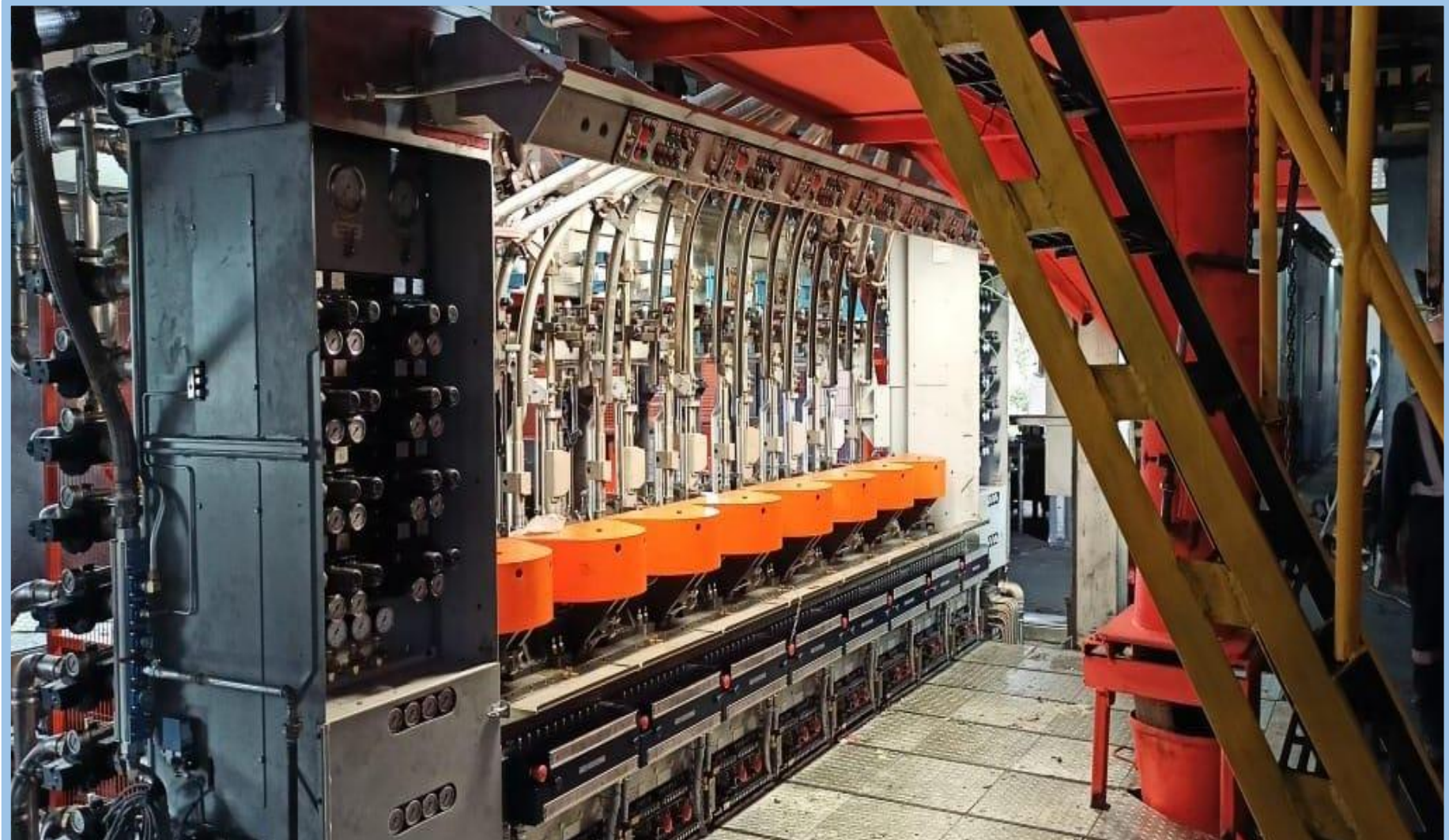


# Furnace Systems & Controls – HORN Germany 2019





## Newly commissioned 8 Section IS Machine – Bottero, Italy





## Newly commissioned 8 Section IS Machine – Bottero, Italy



In operation from September 2021.



### Upgradation of 8 Section IS Machine – Bottero, Italy - 2018



Replacement of Old IS Machine 4 ¼" Centre to 5" Centre

## Newly commissioned LEHR – Antonini, Italy



In operation from September 2021



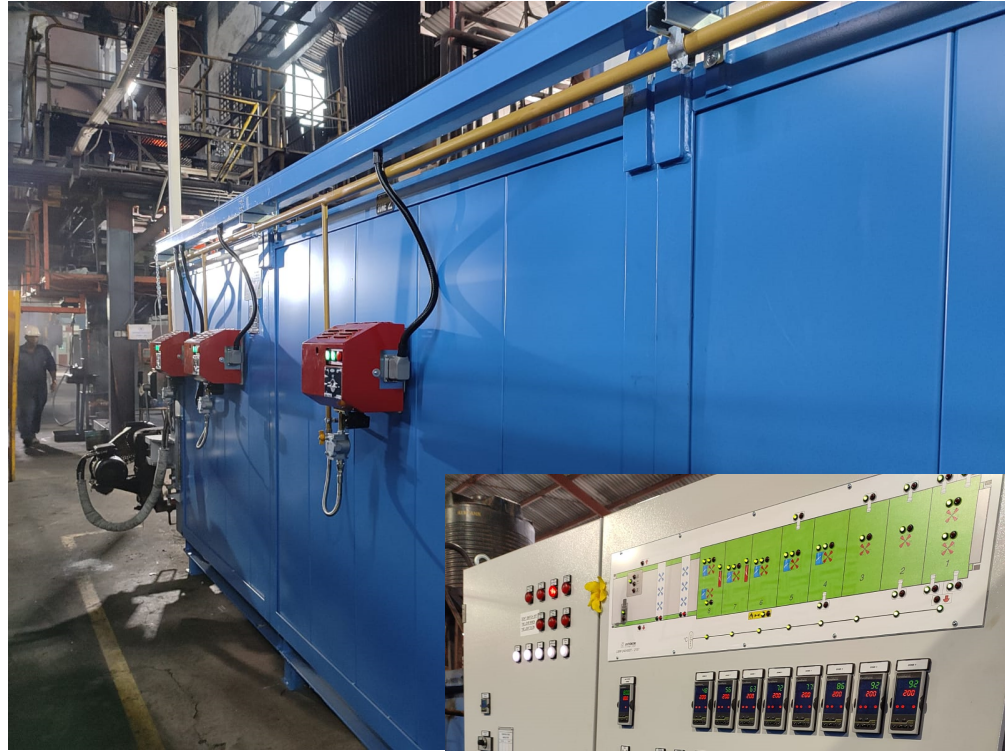
## Newly commissioned LEHR – Antonini, Italy



Investment of KES 20 Mn.



# Production Line 3 - Newly commissioned LEHR – Antonini, Italy



**Installation completed  
in July 23**



2023.7.22 14:16



### 3 Colour Decoration Line 1 – Rosario



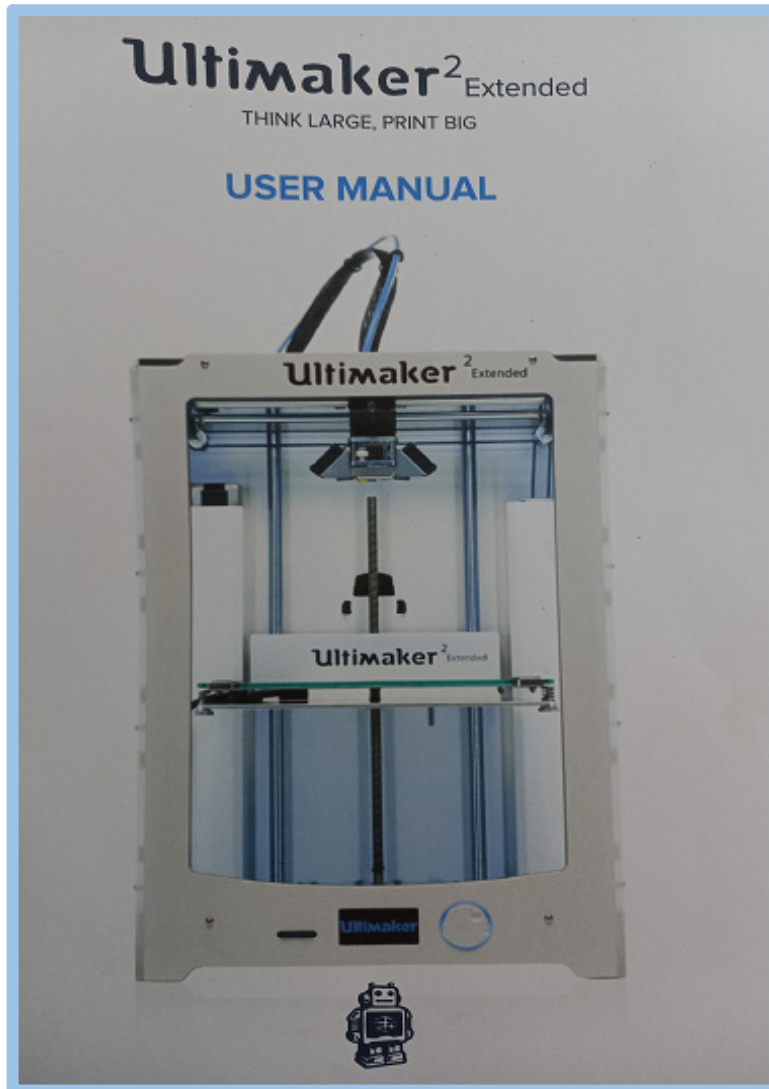


# IRIS Inspection Machine



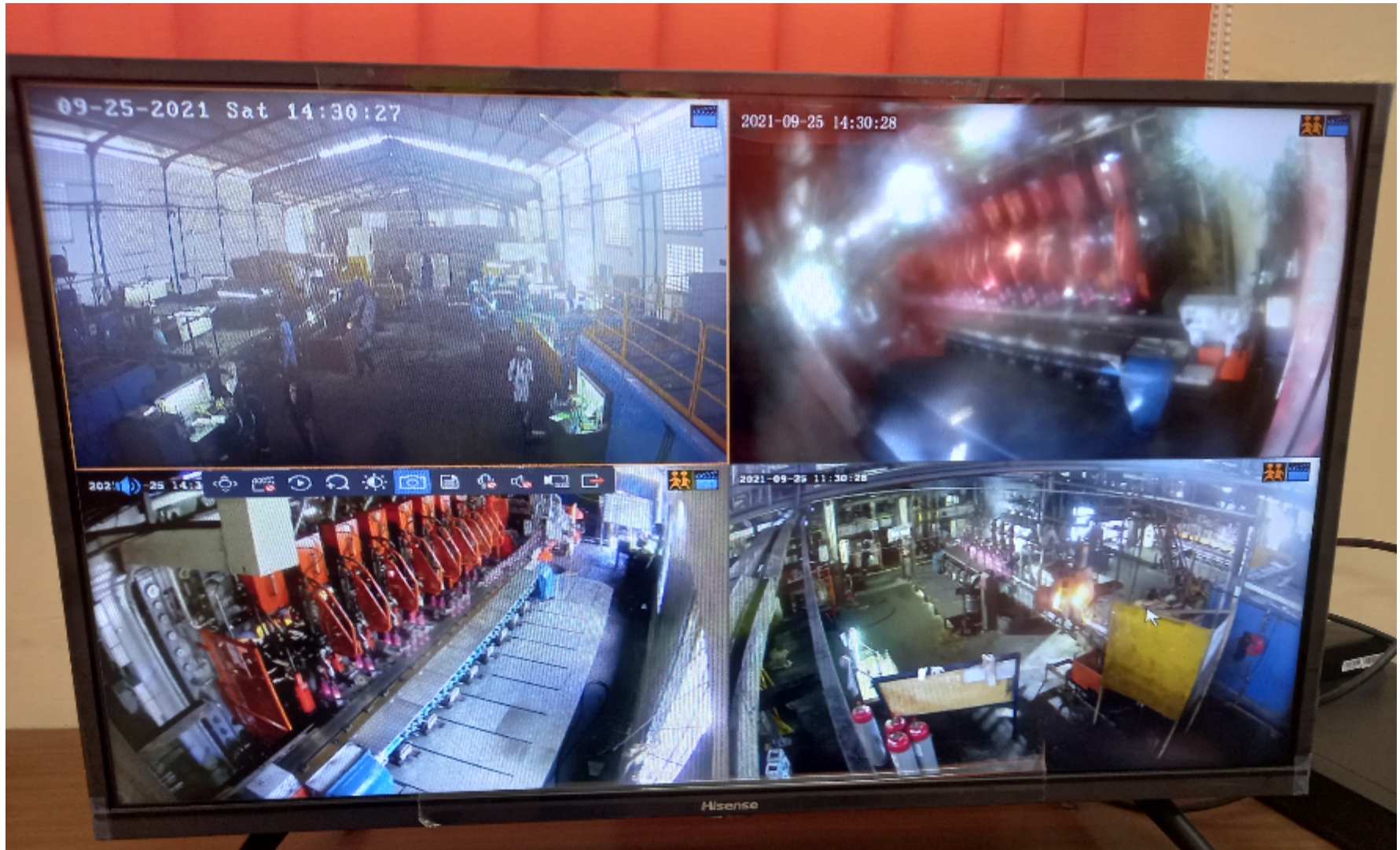
In operation from January 2023

## 3D – Printing for product simulation





# Remote Monitoring of Shop floor



24 x 7 remote monitoring.



# Finished Goods Storage





